

2016

Delegates Information Pack
Australian Diabetes Educators Association
WA Branch Conference



Creating Links

Discovering ways to service demands and gaps in diabetes

May 6 – May 7

New Norcia, Western Australia

Invitation

On behalf of the ADEA WA Branch, it is our pleasure to invite you to the next ADEA WA Branch Conference to be held in New Norcia, Western Australia on the May 6 – 7, 2016. In preparation for the conference, we have put together some information that we hope will prove useful to you as you begin to prepare for the conference and your arrival in New Norcia. In this pack, you will find information such as transportation information, a map of New Norcia township and Exhibition and Trade Display layout, conference registration information, and preliminary program.

We look forward to seeing you in 2016.

ADEA WA Branch Conference Organising Committee

Conference

The ADEA WA Branch Conference had traditionally been an annual branch event since 1991 up until 2012 and is now a biennial event. We take much pride in providing a program of interesting, challenging and informative sessions that will feature national experts, lectures, free communication sessions and clinical and scientific educational symposia. The Conference will provide a stage for novice and established researchers to present their work. The conference is an opportunity for health professionals from multiple disciplines to come together, network and exchange their knowledge of the latest clinical practices and research in diabetes.

Delegates

The conference program will provide learning opportunities for the various health care professionals involved in the care of people with diabetes for both diabetes education and management. They include:

- Diabetes Educators
- Nurses
- Dietitians
- Podiatrists
- Pharmacists
- Psychologists
- Physiotherapists
- GPs
- Practice Nurses /Managers
- Health Care Workers

Key Note Speakers

The 2016 ADEA WA Branch Conference is entitled ***Creating links: Discovering ways to service demands and gaps in diabetes***. It will have a strong focus on initiatives and research dedicated to identify, treat and enable people living with diabetes who are geographically or culturally isolated.

Keynote Speakers will include:

- **Professor Merlin Thomas** *Head, Biochemistry of Diabetes Complications, IDI Baker*
- **Associate Professor Mark Thomas** *Nephrologist*
- **Professor Grant Morahan** *Laboratory Head, Director of Centre for Diabetes Research*

The program will also include ADEA Oral Presentations to showcase current research and practice of ADEA WA Branch members, along with interactive workshops and panel-based education sessions to optimise conference content and professional development for the delegates.

Location and Venue

New Norcia, Western Australia

The ADEA WA Branch Conference is alternated between metropolitan and regional locations to ensure that equitable representation and accessibility is achieved for all Western Australian members. The 2016 ADEA WA Branch Conference will be held in New Norcia, Australia's only monastic town owned and operated by Benedictine monks since 1847. Located 132km north-east of Perth; a leisurely two hour drive through the scenic Swan and Chittering Valleys, a little piece of Spain emerges out of the Australian bush. New Norcia includes an active monastery, a museum and art gallery, chapels with beautiful murals, heritage walking trails, a gift shop and a famous bakery.

With its rich cultural and historical context and unique facilities, New Norcia has been host to many inspired music and art workshops, corporate functions and conferences. It has a varied range of venue halls and workspaces to enable the flexibility of programming required for an enhanced learning experience.

Presentations, interactive learning sessions and company trade displays will be held in the various halls and buildings within the New Norcia township. These will include:

- St Joseph's Hall (*directly opposite the Old Convent*)
- St Gertrude's College
- St Ildephonsus' College

A map of New Norcia has been included within this pack and can be found on page 5. The Preliminary Program is included in this pack on page 7 for further reference.

Accommodation

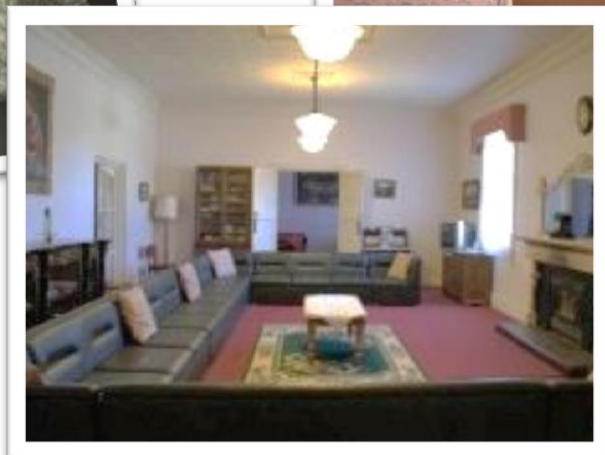
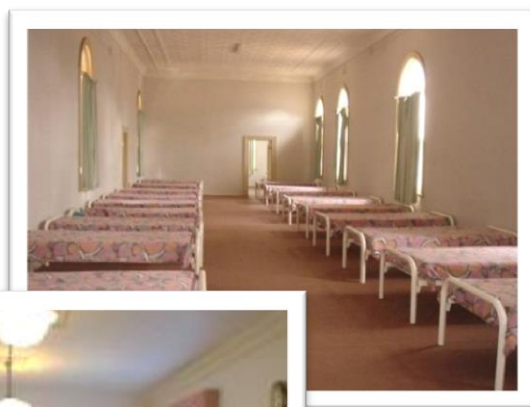
As New Norcia is regionally located, the Conference Organising Committee has reserved various accommodation options in the town for delegates who wish to stay-over following completion of day one of the two-day program. Costs for accommodation are conservatively priced which is in keeping with the conservative style of the facilities. Prices are outlined in the Delegate Registration Information under additional costs and can be selected as add-ons to the registration if required. Rooms will be subject to availability and will be allocated on registration.

New Norcia has a fascinating history. The Organising Committee would like to emphasise that the township and the buildings originated as a Benedictine monastery, housing Benedictine monks who only required the spiritual and simple things in life. It also played a vital role as a mission to house and educate the local Aboriginal people. The accommodation available retains the monastic and simple, yet historical, character. Accommodation facilities that have been reserved for delegates will include:

The Old Convent

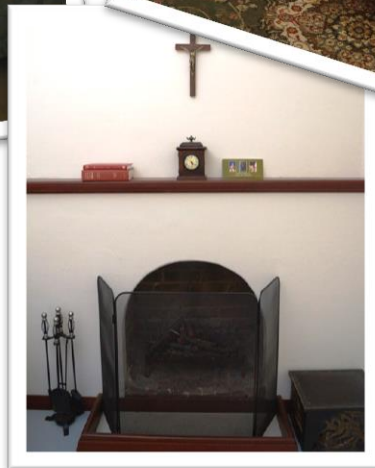
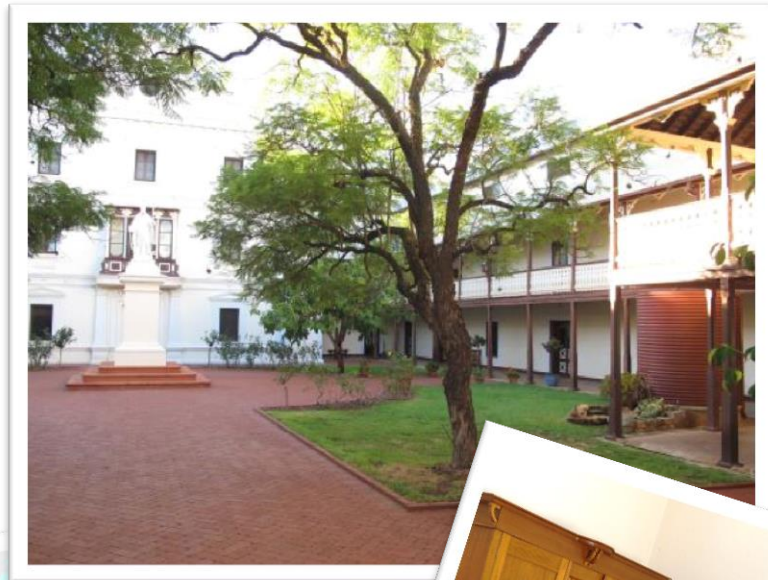
The Old Convent is a courtyard residence tucked away in a secluded part of the New Norcia township. Originally the home of Spanish Benedictine Sisters, this heritage listed building is full of atmosphere and character stretching back over 100 years. The Old Convent has simple but cosy accommodation for a maximum of 30 people, with a variety of single, twin, triplet and quad bedrooms with shared bathroom facilities. It is fully self-contained with a kitchen, dining room and large character lounge with an open fireplace.

Overflow dormitory style sleeping quarters are also available at the Old Convent if demand for accommodation exceeds supply. This will provide a tangible insight into the history of New Norcia and its focus on education and community and pastoral care for indigenous people and rural population that surrounded it. It may even take some of us back to the days of being housed in nursing quarters!



Monastery Guesthouse

The Monastery Guesthouse is a place of retreat for individuals and will be suited to those who would prefer to experience a quiet and tranquil environment that is requested of those that reside here. The Guesthouse can accommodate 24 guests. There are eight twin-share rooms with ensuites and six single rooms and one twin room with shared facilities.



New Norcia Visitor Map

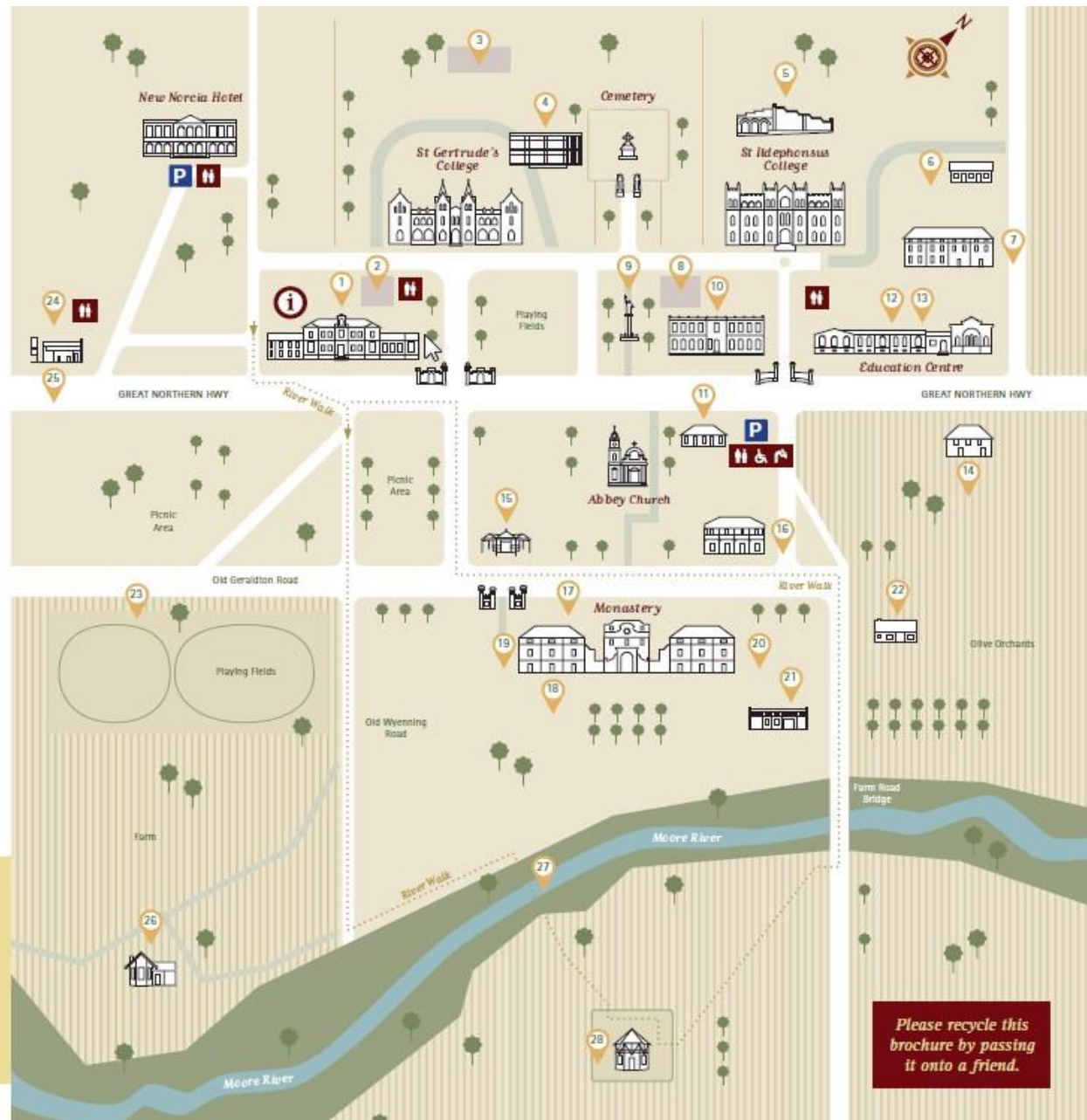
- ① Visitor Centre - Museum, Art Gallery, Gift Shop and Tours
- 1 Old Convent (entrance at rear)
- 2 Work Centre (entrance at rear)
- 3 Swimming Pool
- 4 St Scholastica's Administration Block
- 5 Arcade and Handball Courts
- 6 St Ildephonsus Cottage
- 7 Flour Mill
- 8 Central Library
- 9 Rosendo Salvado Statue
- 10 New Norcia Institute of Benedictine Studies
- 11 Mission Cottage
- 12 European Space Agency Interpretive Room
- 13 Abbey Press
- 14 Old Flour Mill
- 15 Mission Cottages Interpretation Centre
- 16 The Novitiate
- 17 Monastery Parlour
- 18 Monastery Oratory
- 19 Monastery Guesthouse
- 20 Bakery (not open to public)
- 21 Olive Workshop
- 22 Blacksmith's Workshop
- 23 Caravan and Camping Area (self-contained)
- 24 Caravan Bays and Amenities
- 25 Roadhouse and Post Office
- 26 Pig-Keepers' Cottage (Guesthouse Hermitage)
- 27 Ford and Weir
- 28 Apiary

- Parking
- Water Fountain
- River Walk (self-guided)
- Toilets
- Disabled Toilets



Daily Guided Town Tours 11.00am and 1.30pm (2 hours)

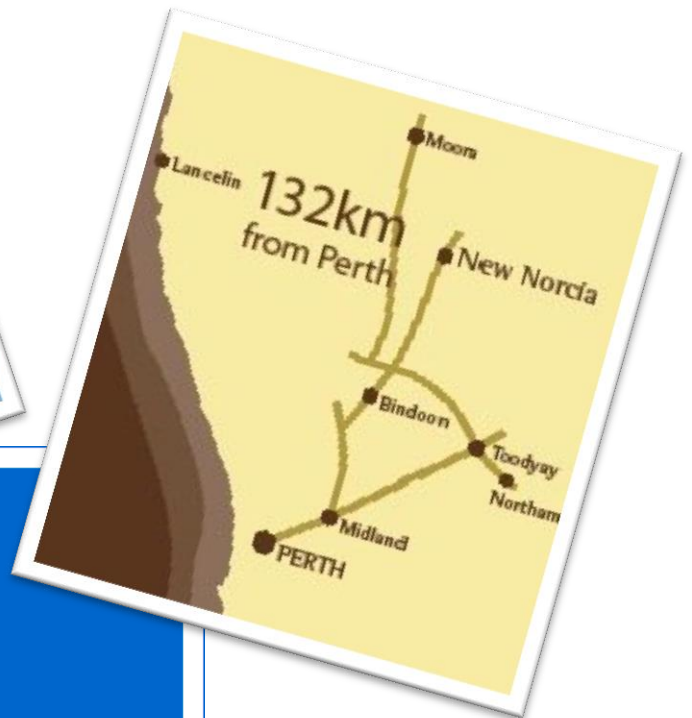
A guided tour is the best way to discover New Norcia. Hear stories of the last 160 years and visit the monks' own chapel within the monastery, Abbey Church and beautifully frescoed interiors of the College Chapels not otherwise open to the public. Tour tickets can be purchased from the Visitor Centre.



Transport

New Norcia is located 132km north-east of Perth and is a leisurely two hour drive. Refer to the Registration information to co-ordinate your travel time.

The Organising Committee recommends that members car pool to New Norcia.



Preliminary Conference Program

DAY 1			Friday 6 May 2016
1130- 1300	Registration and Lunch with Trade Display		St Gertrude's College
1300 – 1330	Conference Opening, Welcome Address & Welcome to Country		St Joseph's Hall
1330 – 1430	Professor Merlin Thomas <i>Linking the biochemistry of complications to improving outcomes in type 2 diabetes</i>		St Joseph's Hall
1430 – 1530	Clinical Professor Mark Thomas <i>Meeting the challenge of renal disease in the Aboriginal population</i>		St Joseph's Hall
1530 – 1600	Afternoon Tea with Trade Display		St Gertrude's College
1600 – 1700	Abstracts / Oral Presentations x 4		St Joseph's Hall
1700 – 1715	Close of Day 1 & Evaluations		St Joseph's Hall
1900 – late	Pre-dinner drinks and Conference dinner		St Ildephonsus' College

DAY 2			Saturday 7 May 2016
0730 – 0830	Concurrent Breakfast Symposium Hall 1	Concurrent Breakfast Symposium Dining room	St Gertrude's College
0845 – 0930	ADEA WA Branch Meeting		St Joseph's Hall
0930 – 1030	Professor Grant Morahan <i>Research meeting reality</i>		St Joseph's Hall
1030 – 1100	Morning Tea with Trade Display		St Gertrude's College
1100 – 1245	Transition in type 1 diabetes <i>A panel discussion on when, how and addressing the barriers</i>	Virtual Consultations <i>Technology and initiatives bridging the gap of geography</i>	St Gertrude's College St Joseph's Hall
1300 – 1310	Final Address – WA Branch Chair		St Joseph's Hall
1310 – 1315	Conference Closing & Evaluations		St Joseph's Hall
1315 – 1345	Lunch with Trade Display		St Gertrude's College
1345 – 1645	<i>Boston Scientific</i> Erectile Dysfunction and Diabetes <i>The unspoken complication: Identification and management</i>		St Joseph's Hall

Delegate Registration Information

Register online at www.adea.com.au via [Home](#) > [Events](#) > [ADEA conferences](#) > [2016 ADEA WA Branch Conference](#). All details and selection of additions to registration fee to be completed via online registration.

Registration will open February 15, 2016.

Registration closes Friday 3pm (WA time), April 22, 2016.

Registration Fees (incl. GST) Includes Dinner and Entertainment

ADEA Membership	Early Bird Fee – Before March 30, 2016	Normal Fee – After March 30, 2016
Full Member	\$165	\$185
Associate Member	\$165	\$185
Student Membership	\$165	\$185
Retired Membership	\$165	\$185
Non-Member	\$215	\$235

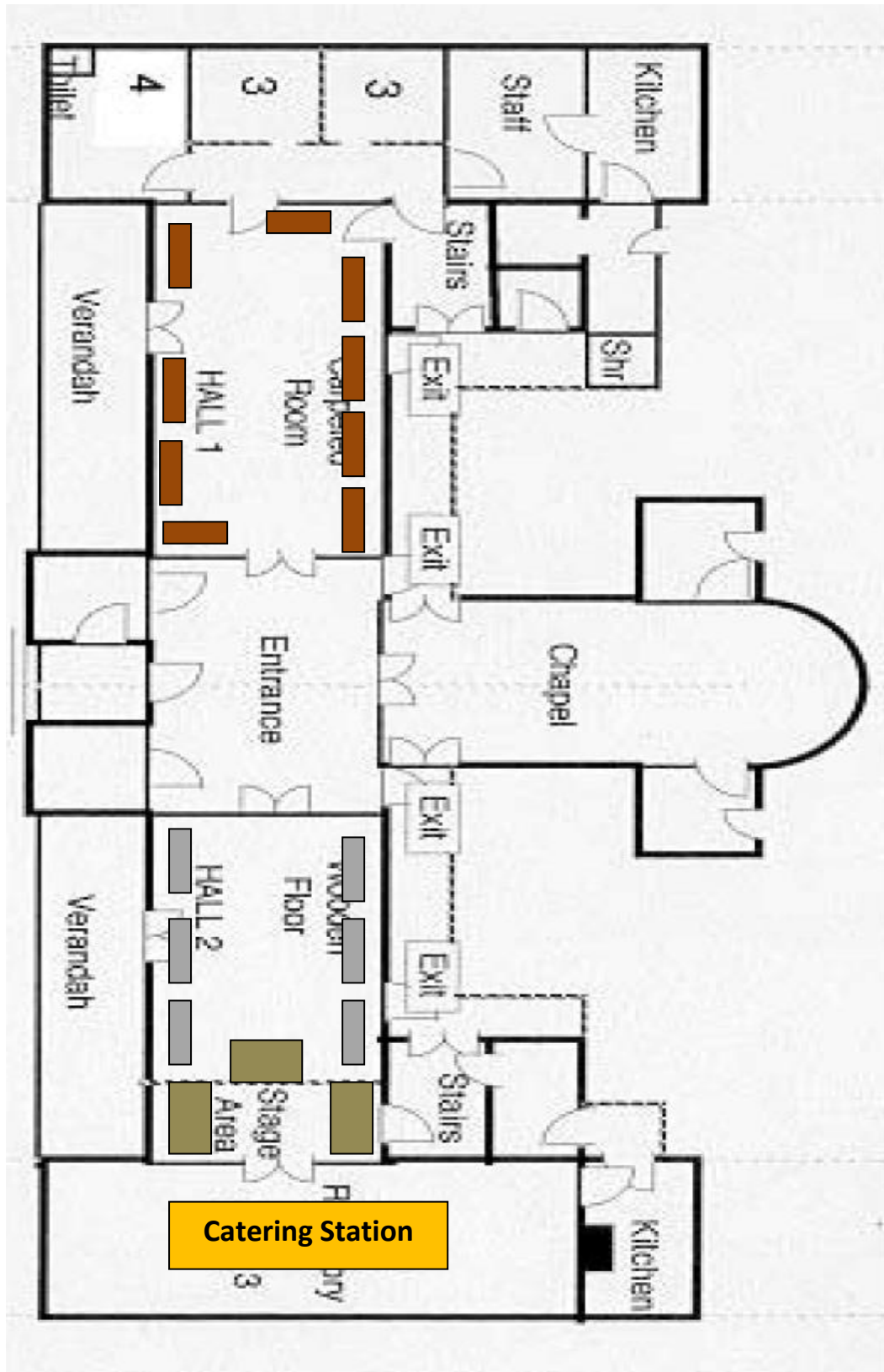
Additional Costs (excl. GST)

Conference Dinner	\$90
Accommodation	\$50

Registration Times and Venue

Day 1	Friday, May 6 2016	11:30am	St Gertrude's College
Day 2 <i>Only necessary if delegate did not attend day 1 of program and register at this time</i>	Saturday, May 7 2016	07:00am	St Gertrude's College

St Gertrude's College Ground Floor Plan Exhibition and Trade Display Positioning



Snapshots of New Norcia

